

T-57 is a 125Khz desktop Reader&Writer of T5577&EM4305 tags. It's easy to operation, not only can copy the TK4100/EM4100 cards, but also Writable the EM4305/T5577 cards. Widely used for RFID Radio Frequency Identification system and project, Such as charge system, check-ins system etc.

I Technical Parameters

Item	Parameters
Model	T-57
Frequency	125Khz & 134.2Khz
Support cards	T5557、ATA5567、ATA5577、EM4205、EM4305 etc
Size	104mm×68mm×10mm
Colour	Black
Interface	Virtual serial port(USB to RS232)
Power Supply	DC 5V
Operating Distance	0mm-50mm(related to the card or the environment)
Service Temperature	-10℃ ~ +70℃
Store Temperature	-20℃ ~ +80℃
Working humidity	<90%
Read time	<200ms
Read interval	<0.5S
Weight	About 140G
Cable length	1400mm
Material of reader	ABS
Operating System	Win XP\Win CE\Win 7\Win 10\LIUNIX\Vista\Android
Indicators	Double Color LED (Red & Green) and Buzzer

II Instructions for use and Precautions

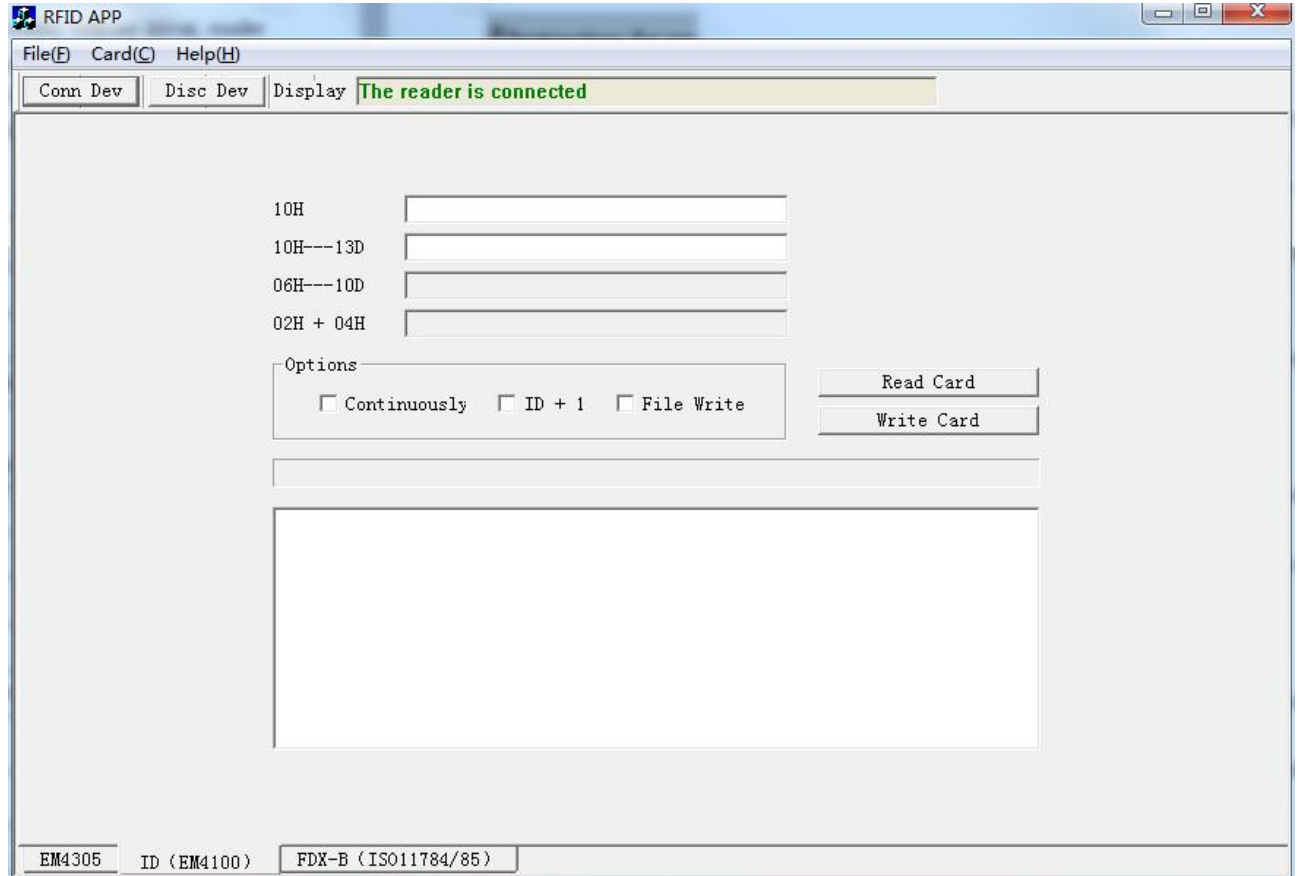
Step 1 Please install the virtual serial port driver for the first time(Driver name is PL2303);


Step 2 Connect with computer through USB interface directly. When the buzzer sounded, Device into the self-inspection. And the same time, green light turn into red means

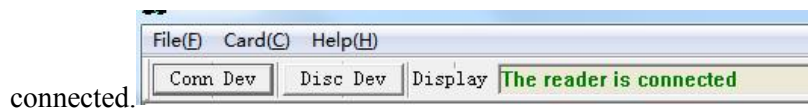
standby.

Step 3 Opening the Demo(RFID_APP_EN.exe) and Writing the data by self.

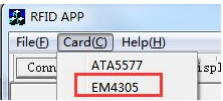
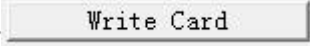
Example 1 Copy the Cards(Copy the card data to EM4305 from EM4100 card.)



- Connect the device and open the software, then click the command “”. At the same time, the menu has told us that the reader is



connected.

- Choice the card type to “EM4305.” 
- Write the EM data in the first edit box, the format of data is 10Hex.
- Put on an EM4305 card on the device and click the “Write Card”  command.

Precaution

- 1) The meaning of options

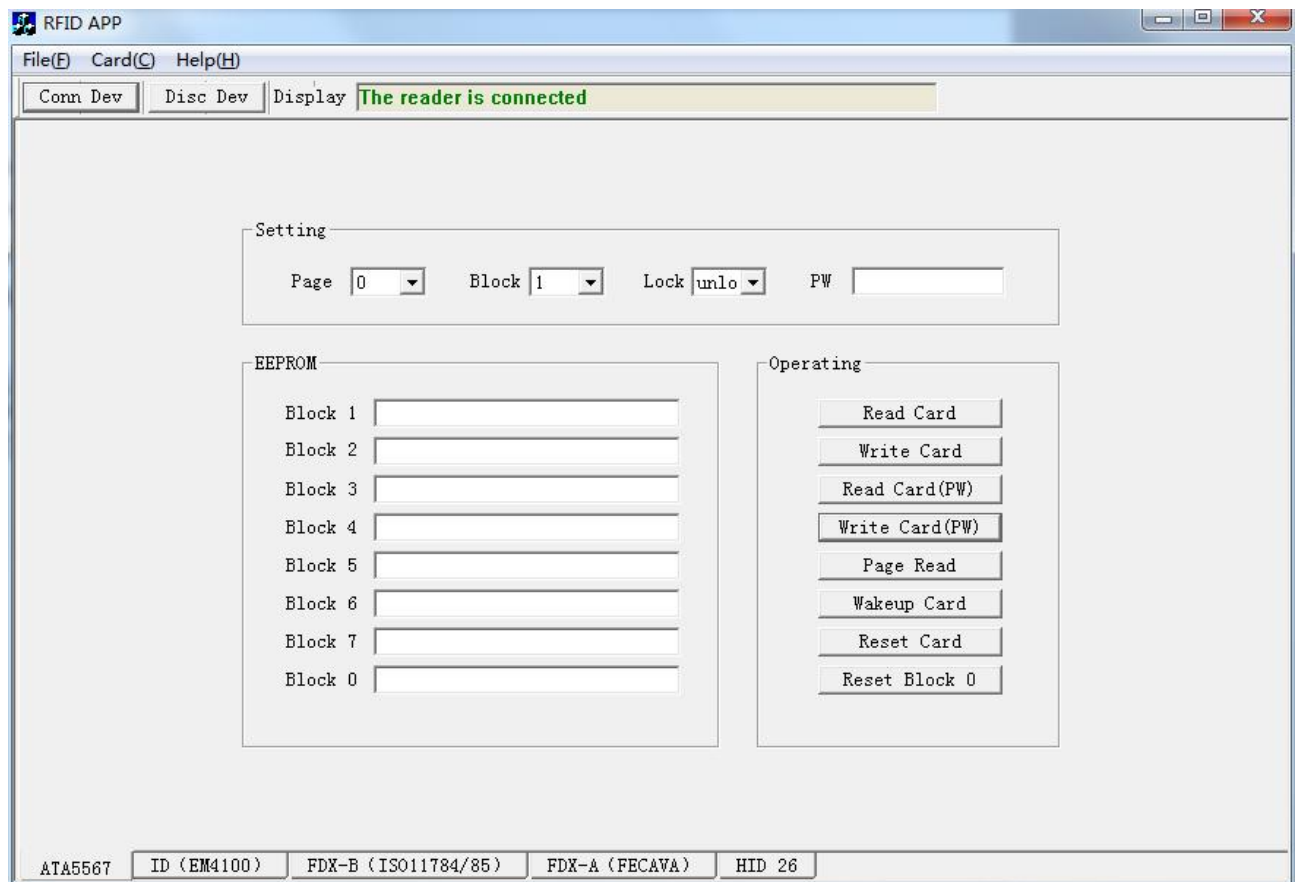
Continuously ”Continuously”: Write the same ID number into the EM4305 cards.

ID + 1 ”ID+1”:Finish the first card, the ID number of second card will add 1 automatically;

File Write ”File Write”: Import data from the a”.txt” file.

2) If your operating system is Win8 or Win10.please updata the driver.

Example 2 Writing the data into the cards of EM4305&T5577



- After the device is connected successfully.Change the type of cards to “ATA5577”.
- Put the T5577 card on the desktop device.Setting the parameters and click the “Write Card” command.

Precaution

- 1) T5577 card has 2 pages(page 0 & page 1), different pages has different mean. As follows:
 - ① There are 7 blocks in page 0;
 - ② ”Block 0 ” is an system area, it can’t be changed this block data;
 - ③ ”Block 7” is Encrypt the card,the content is the password; also, it can ave the data like

other blocks that if don't to encrypt.

- 2) There are 2 blocks in gage 1, both of them use to save the data .
- 3) "Unlock": if do it, the card data will be changed forever.
- 4) 'password': The User should be write the password in it when reade or write.be
- 5) Other precaution
 - ① If don't know the password of the card, the user can get the data through click this command"Page reader";
 - ②"Reset Block 0": Factory Reset is means delete the data of the card that including the encryption cards, but cann't reset the lock cards.
- 6) Every reader or write is after all parameters be setted.

III Pictures

